



www.huawei.com

Huawei AR G3 Router cases on Industry Networks

MO 2011-11

HUAWEI TECHNOLOGIES Co., Ltd.

HUAWEI Confidential



One-Stop branch of ICBC



ICBC

中国工商银行

Background

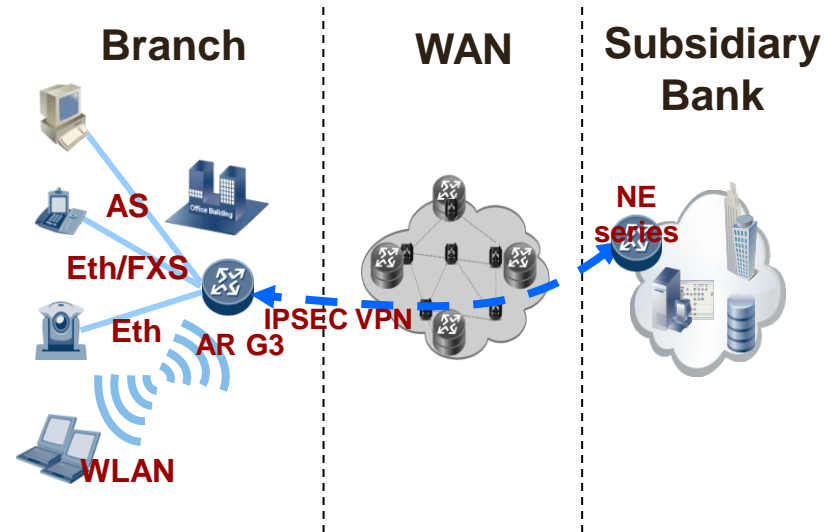
With the transformation of commercial banking, branches gradually shift from a business processing center to sales and service channels. Customer-focused, efficient, real-time and customized financial services have remarkably changed the banking branches in network applications. Based on traditional real-time business and office automation applications, the branches will introduce more and more services such as UC, collaboration, digital media advertising, high-quality video services and integration applications.

Huawei Solution

- Use NE series router in subsidiary banks and AR G3 in branches to build a wide access network for financial enterprises. Rich product specifications, to meet the needs of any-sized branches.
- Deploy IPSEC to encrypt the business of the bank. Ensure bank information security.

Benefits

- Based on profound accumulations in WLAN and 3G, Huawei built a high-bandwidth, high-reliability, stable wireless and mobile network, extending the range of companies financial services.
- Huawei access switches are noise-free design inside, not only decrease the power consumption of network, but also effectively reduce the noise, to build a green network



Vodafone OneNet Project



Background

- The OneNet global program was set up with the objective to “Deliver a consistent set of differentiated multi-media services to wholesale, business and residential customers, independent of last mile copper / fiber or other access media delivery. Deploy a network that delivers a clear path to common core infrastructure, allowing FMC services and the reuse of core infrastructure for mobile and fixed”.

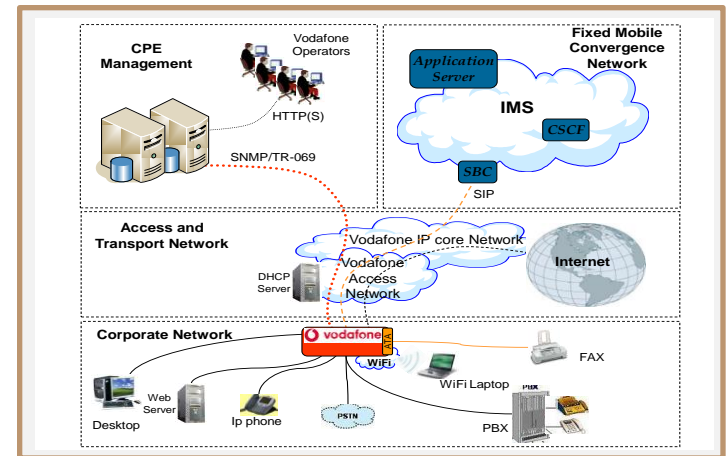
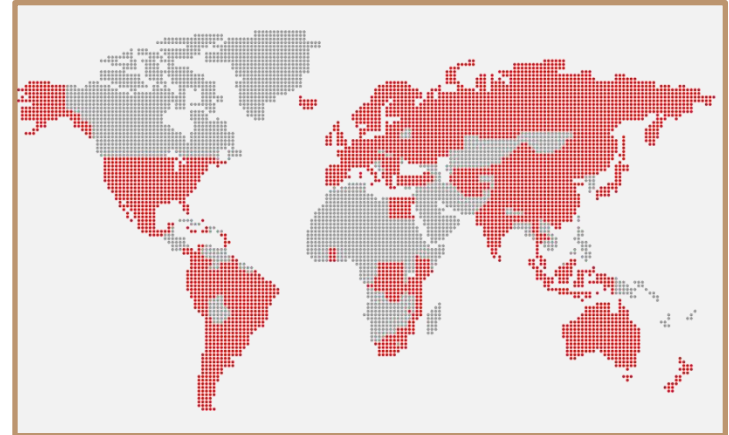
Huawei Solution

- Huawei provide all-in-one CPE router AR G3 with full support of build-in voice, high speed internet access, WIFI/3G/4G wireless access solution, abundant interfaces and Zero-Touch O&M Solution to simplify the network design and service launch.

Benefits

- Provide Voice, Internet, VPN, Security services only by one-box, and Vodafone can expand services easy and quick.
- Because of the good interoperability with existing vendors equipments, a lot of interoperable test and version development work can be saved.

Huawei ARG3's:
“AR1220 fully tested by Vodafone, and scored extremely good in their test lab beating Cisco's SRP 547



Ambulance Service of NSW Australia

Background

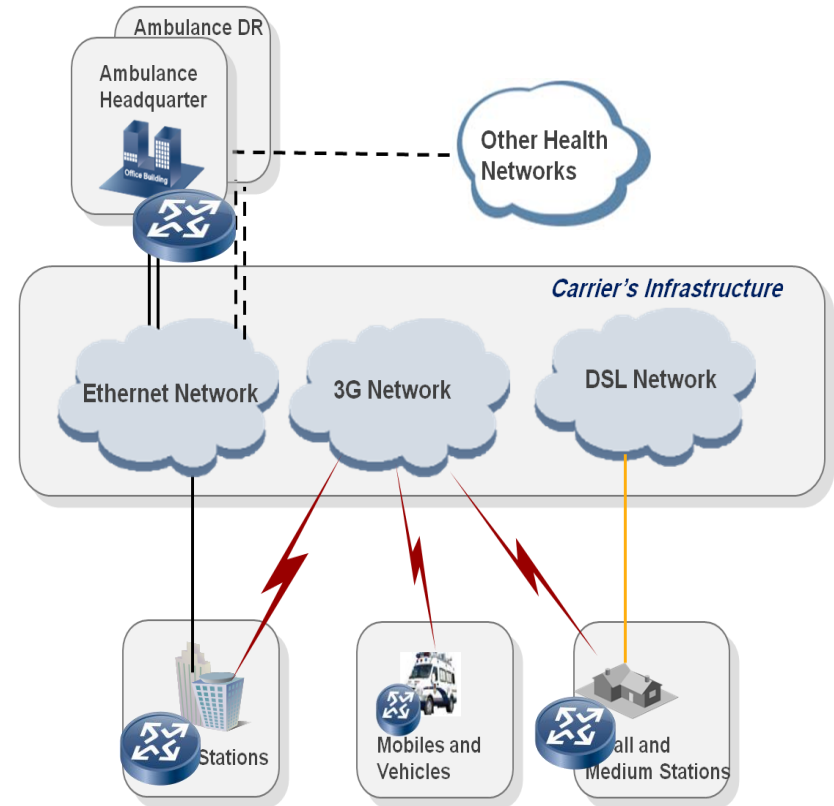
- Ambulance Service of New South Wales is a state owned organization in Australia who is providing high quality clinical care and health related transport services to over 6.7 million people in NSW, distributed across an area of 801,600 square kilometers.
- Require high Reliable , stable and performance WAN infrastructure to connect about 260 stations to the HQ as well as 1500 vehicles via 3G/4G in the future

Huawei Solution

- Providing AR1220VW, AR2220/AR2240 and AR3260 for the fixed stations with supporting Dual uplink (ADSL/Ethernet and 3G/4G)
- Providing NQA to monitor Wireless uplink and developing adaptive QOS for improve stability and service continously over carrier's Non-QOS network

Benefits

- Best performance after Conducting tests and trial comparing with other competitors
- Smart and efficient Dual backup solution to aim smooth switch over for critical Applications
- Strong QOS ,Security and Voice features without extra cost and hidden expenses.



BT-GS Carrier Enterprise Business

Background

- Lower cost of managed WAN/LAN service, increase cash flow
- Rich LAN/WAN service involved,
- Global application
- Third partner OSS integration to realize zero-touch management
- Expand new services

Huawei Solution

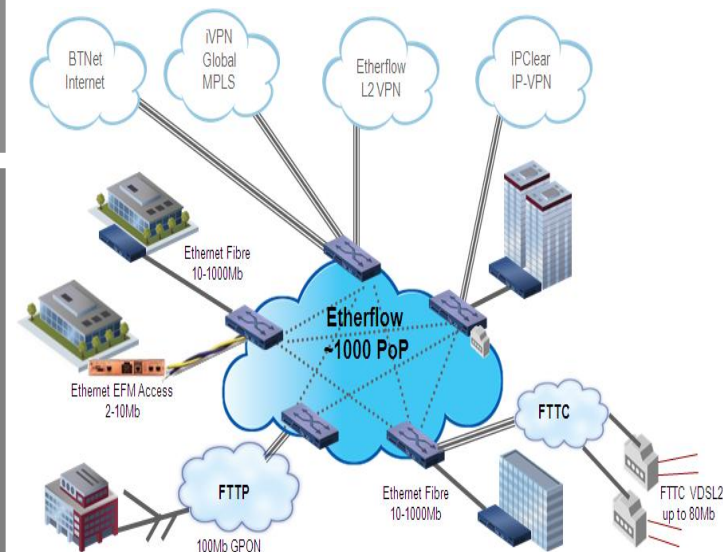
- Delivering since second quarter 2011 All-in-one multi-service WAN/LAN products
- ARG3 routers can be integrated with several third partner OSS systems, to provide effective support.
- Establishment of B2B platform simplifies customer orders, service process

Benefits

- Improve financial figures: cost reduced and cash flow increase
- Good interoperability with current suppliers, less effects of vendor change on the enterprise customers
- Uniform OS, reduce the configuration complexity and maintenance CAPEX
- Fewer device types, satisfying several application scenario
- Support Zero Touch, Plug and play



Huawei ARG3's:
"Extremely tested in 5 different scenarios, performance is around 50% higher than current vendor equipment".
Do you believe that it is better?



Santander Bank Campus Access

Background

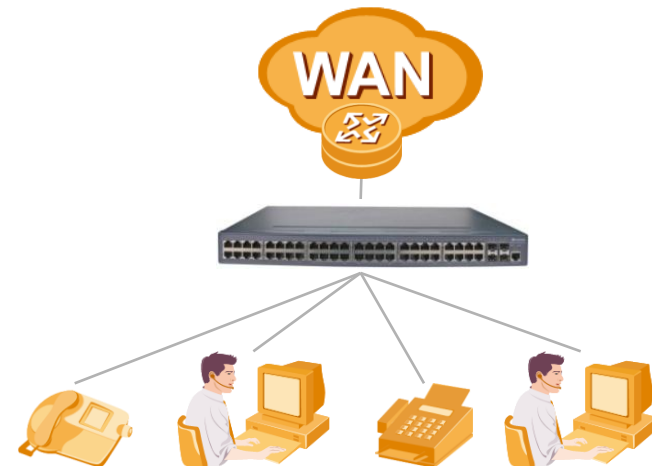
- The Santander Group is a banking group centered on Banco Santander, S.A., the largest bank.
- In the Euro zone and one of the largest banks in the world in terms of market capitalization.
- Santander Group need a multi-domain, multi-service network, based on standardized technologies to avoid “single vendor” dependency.

Huawei Solution

- Huawei provides an end-to-end, open and feature rich product portfolio, that fulfill the different needs of the Santander Group as second vendor. Since second quarter 2011 Huawei provides LAN switches for branch offices.
- Huawei is also validated as provider for LAN switching solution for Campus or Single buildings.
- Huawei is also in validation phase for AR, IPCC and Telepresence solution.

Benefits

- Well proved products. All LAN Switches (Sx7) and ARG3 have passed test
- Open standard & Cost effective solutions.
- Quick transaction response on network
- Quick response to Customers needs and requirements, short lead times and fast development.



PICC network Project

PICC

中国人民健康保险股份有限公司
PICC Health Insurance Company Limited

Background

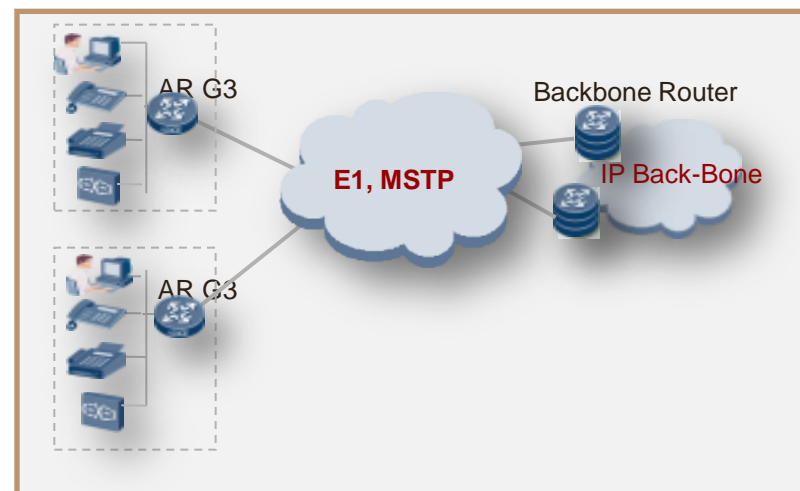
- PICC was one of the largest insurance companies in China. A total of more than more than 12,000 Branches.
- PICC is the partner of the Beijing Olympic Games and Guangzhou Asian Games.
- PICC branch locations is sparse. Need a high quality of access networks to achieve ubiquitous and efficient access.

Huawei Solution

- Huawei AR G3 routers are deployed to construct the ubiquitous network for PICC, to realize PICC high-efficiency branch access from anywhere.
- Hundreds of AR2220 are used in PICC's network throughout the country.

Benefits

- Achieving network efficient, ubiquitous access. Widened business coverage and quality of service.
- Sufficient bandwidth and reliability, allow enough room for expansion for business development.



Kunming Rural Credit Cooperative Union Association WAN Project

Background

- Kunming (RCCUA) is one of the most important financial institutions in Yunnan province . There are nearly 400 Branches
- RCCUA wants to build a network to carry Internet services and video services. It requests that Wifi terminals and PC can flexibly access the network.
- The certification, authentication, and auditing functions are required to prevent attacks from network and individuals.

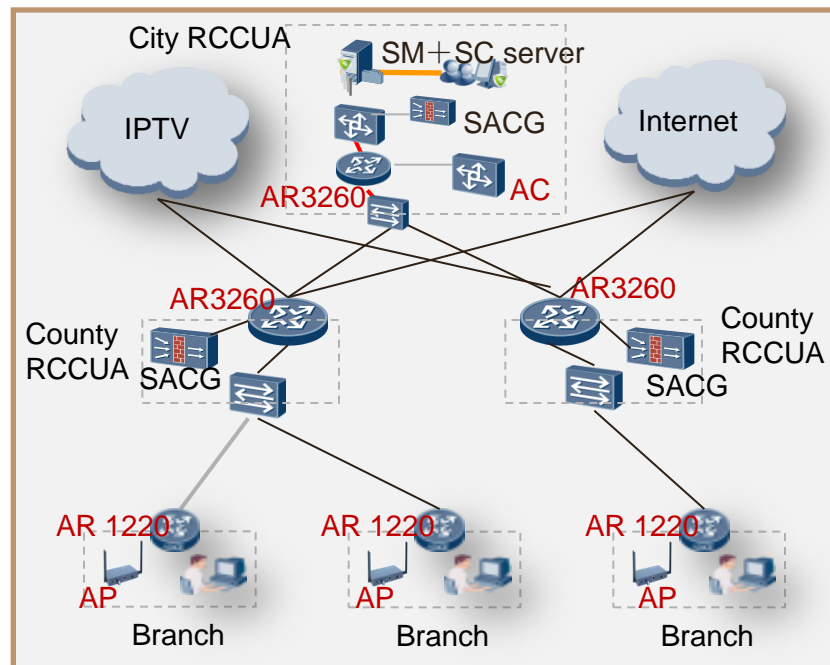


Huawei Solution

- With more than 400 AR G3 (AR1220 and AR3260) for WAN interconnection of Kunming RCCUA branches.
- Deploy the AP (WA603SN) and AC (WS6603), achieving mobile Internet access.
- Deploy Huawei NAC solution, to access user authentication, integrity and auditing. And to prevent attacks on the Internet

Benefits

- Achieving network efficient, ubiquitous access, enabling integration of wired and wireless access, boosting productivity.
- High security and effectively prevention of Internet attacks, and user authentication, integrity and audit ensure that the internal information security.



Safety Monitoring system of Zhejiang Province

Background

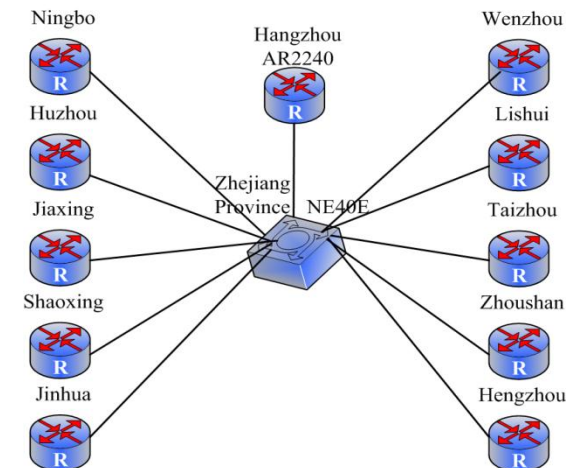
- Zhejiang broadcast and television monitoring center IP data transmission platform was completed in 2003. Core nodes with Huawei NE08E router , edge nodes using Huawei R3680E router, stable running for more than 7 years.
- The platform consists of provincial Center 1 core nodes, huzhou, jiaxing, Ningbo, Wenzhou, Hangzhou, Shaoxing, Jinhua and Quzhou and Lishui, Zhoushan, Taizhou, 11 edge nodes in total.

Huawei Solution

- All of the 11 edge nodes used Huawei new generation AR G3 2240 routers with multi-core cup and non-blocking switch architecture. Excellent system performance and Extensibility to fully meet the needs of future expansion.
- Core router NE40E ensure operational reliability.

Benefits

- Helping Zhejiang broadcast and television monitoring center complete the construction and upgade of IP data transmission platform network infrastructure.
- Providing integrated solutions, Accelerating customer business.
- maximally protectting customer investments.



Xinjiang Corps Project

Background

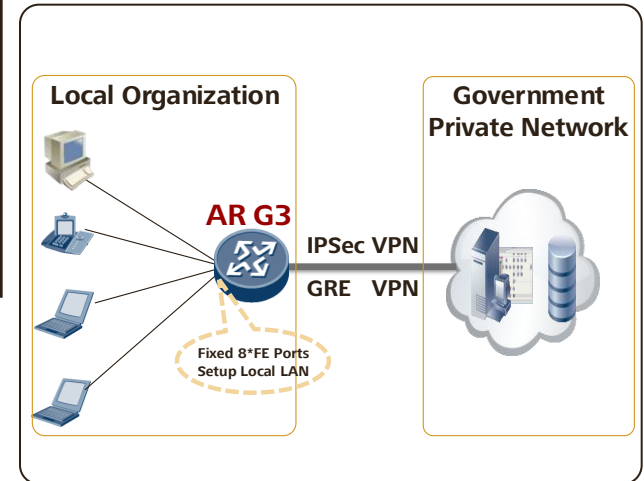
- Setup high performance network to carry corps' quick development
- Secure network and quick deployment
- Egress router connects local LAN network and external network

Huawei Solution

- AR G3 with multi-core and distributed architectures provides high performance.
- Support IPsec VPN and GRE VPN
- USB-based deployment simplifies remote deployment
- Integrated routing and switch (AR1200 with 8*FE LAN ports) save the cost of switch and reduce failure point.

Customer Benefits

- Build up high-speed and secure information platform
- Shorten the deployment period
- Save the cost of switch, win with customer



Sinopec Guangdong Branch Gas station AR project

Background

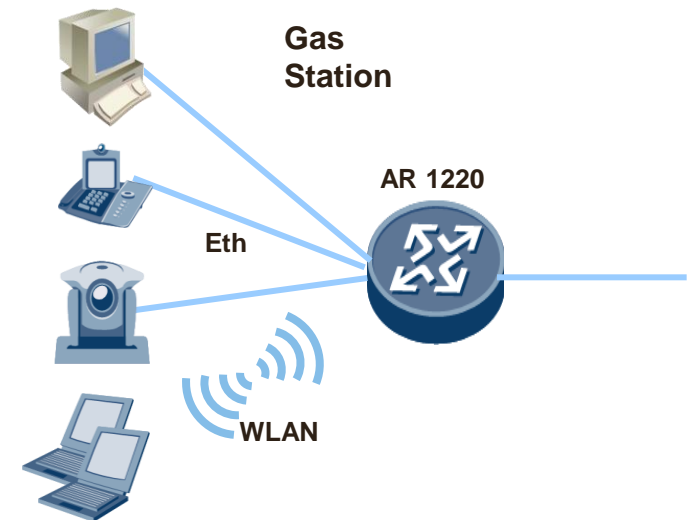
- With the business development and more abundant service of Gas station, Sinopec Guangdong Branch updated the bandwidth from 2Mbps to 10Mbps for OA, Accounts, monitoring and other service. The existing access router can't meet the requirement, it became the bottleneck of the network.

Huawei Solution

- 2200 AR1220 router are built in each Gas Station in the province. AR1220 is access router which is designed with multi-core process, supports 350KPPS forward capability, has strong multiple service processing function, includes data, voice, security, route, switch and VPN function and supports abundant interfaces.

Benefits

- Project was delivery with good satisfaction, AR1220 which has strong forward capability not only satisfy the customer's expectation, but also reserves enough capacity for future.



Liaoning Flood emergency dispatch management system

Background

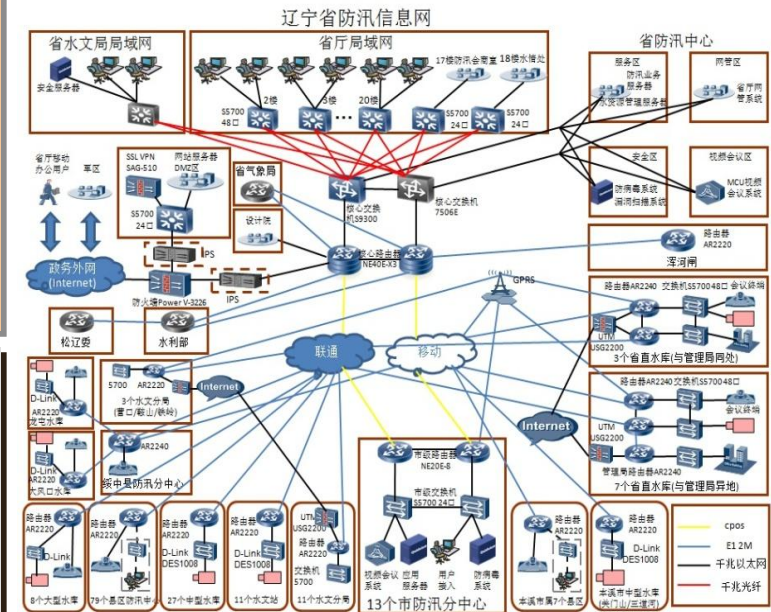
- It need to expand existing water conservancy information system: expand province, city, district three layers' water conservancy information system; expand bandwidth of interconnection between three layers' network system, make access for large-scale and middle-scale reservoir and provincial hydrological station; build secure control platform for whole information network.

Huawei Solution

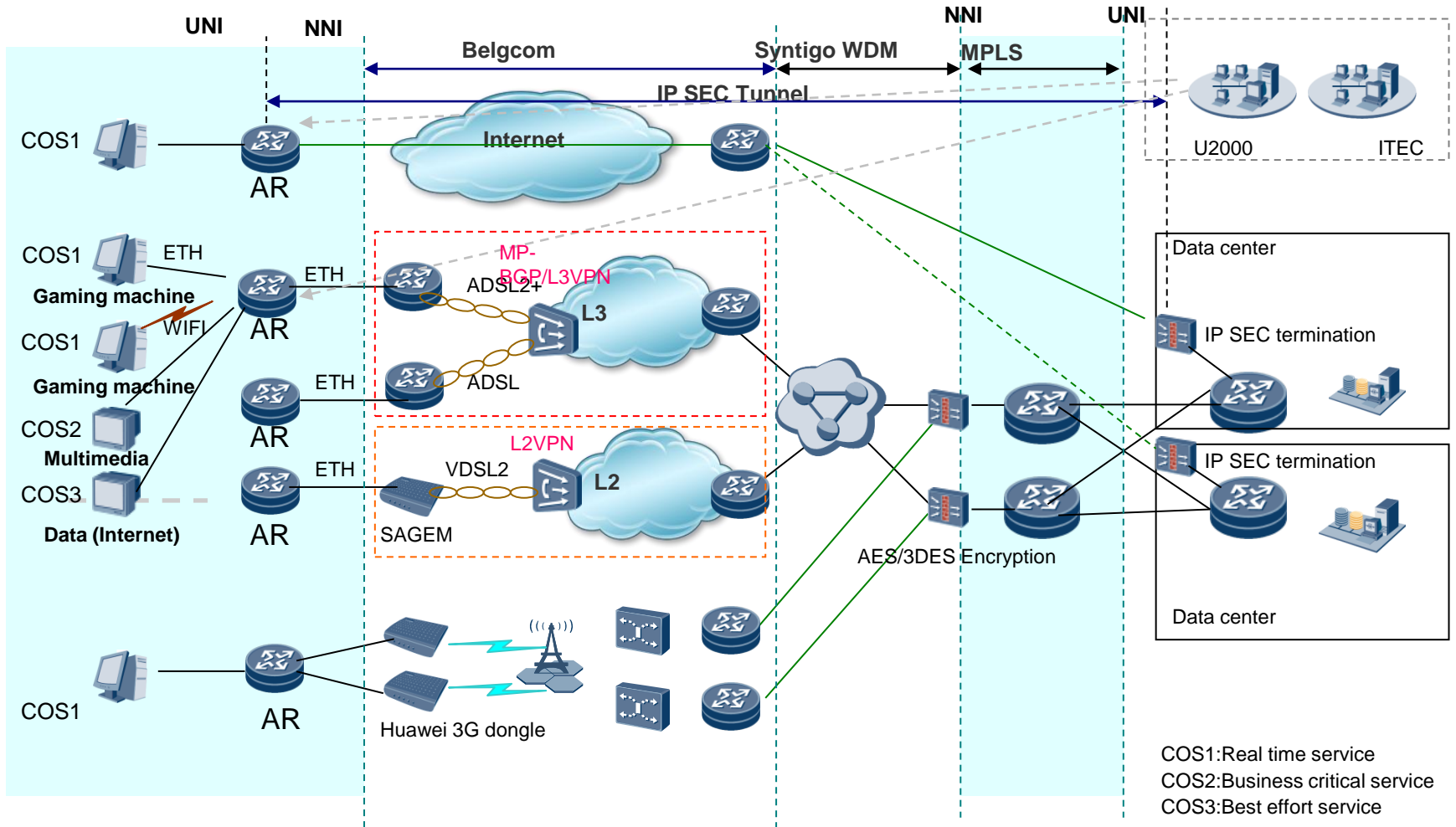
- Core layer: built 2 High-end core routers NE40E-X3, built one high performance switch S9306 which worked in Hot Standby mode with existing switch.
- Convergence layer: built 2 middle-class router NE20E-8 in all 13 City flood control sub-centers and provincial big-class water conservancy.
- Access Layer: built AR2200 router which support both fixed and wireless access, built S5700 switch for interconnection according the requirement.

Benefits

- The system realize network interconnection in whole province, includes province center, city/district center, all water conservancy, hydrological station, hydrological monitoring stations. Video monitoring with high bandwidth and high reliable mechanism is provided for all dispatch meeting, communication meeting, training.



Syntigo Lottery Project (On Going)



Thank you

www.huawei.com

Copyright©2010 Huawei Technologies Co., Ltd. All Rights Reserved.
The information contained in this document is for reference purpose only, and is subject to change or withdrawal according to specific customer requirements and conditions.